

REPUBLIC OF **Fritz Hansen**®

PROJECTS

INTRODUCTION

THE ART OF AMBIENCE

At Republic of Fritz Hansen™, our focus isn't limited to furniture. Or to function. It goes beyond objects to creating an environment that reflects your company, your brand, your vision and ambition.

Drawing on our decades of experience crafting timeless designs, we have in-depth expertise on creating a space that echoes your image. Something inspiring to your staff and customers, alike. With a cohesive aesthetic that makes the experience of your company just that – an experience.



THE PSYCHOLOGY OF SPACE

Why do we take space so seriously? Because it has an irrefutable impact on people's mood, mind-set and behaviour. In fact, more and more research reveals that the work environment plays a crucial role in attracting, motivating and retaining staff. It contributes to job satisfaction and a sense of wellbeing. What's more, it signals management with conviction.

It's all about how aesthetics impact our surroundings. By tuning into your needs, we can transform a cold, corporate environment into something warm and welcoming. Bring a sense of privacy to a public space. Make an airport a destination in itself. And much more.

CONTENT

The following pages are dedicated to visualise how we work with corporate environments. The purpose? To create impact through aesthetic interior settings. Take part in our revolution towards aestheticising work environments. Find the inspiration to get started in this book of captivating cases and references.



SERIES 7™
P 4-9



ANT™
P 10-11



GRAND PRIX™
P 12-13



DROP™
P 14-15



NAP™
P 16-17



RIN™
P 18-19



LITTLE FRIEND™
P 20-21



OXFORD™
P 22-27



EGG™
P 28-31



SWAN™
P 32-35



RO™
P 36-39



PK80™
P 40-41



FRI™
P 42-45



minuscule™
P 46-49



VIA57™
P 50-51



PAIR™
P 52-53



PLURALIS™
P 54-55



OKSEN™
P 56-57



RO™ SOFA
P 58-59

SERIES 7™

DESIGNED BY ARNE JACOBSEN, 1955

Series 7™, 3107, the Seven chair. The many names underline the iconic status Arne Jacobsen's chair has obtained with time. The design is as solid as the nine layers of steam-bent veneer used in the creation of this bestselling stacking chair.



Credit: Rasmus Hørtshøj

M/S Maritime Museum of Denmark

Location: Elsinore, Denmark

Project completed in: 2013

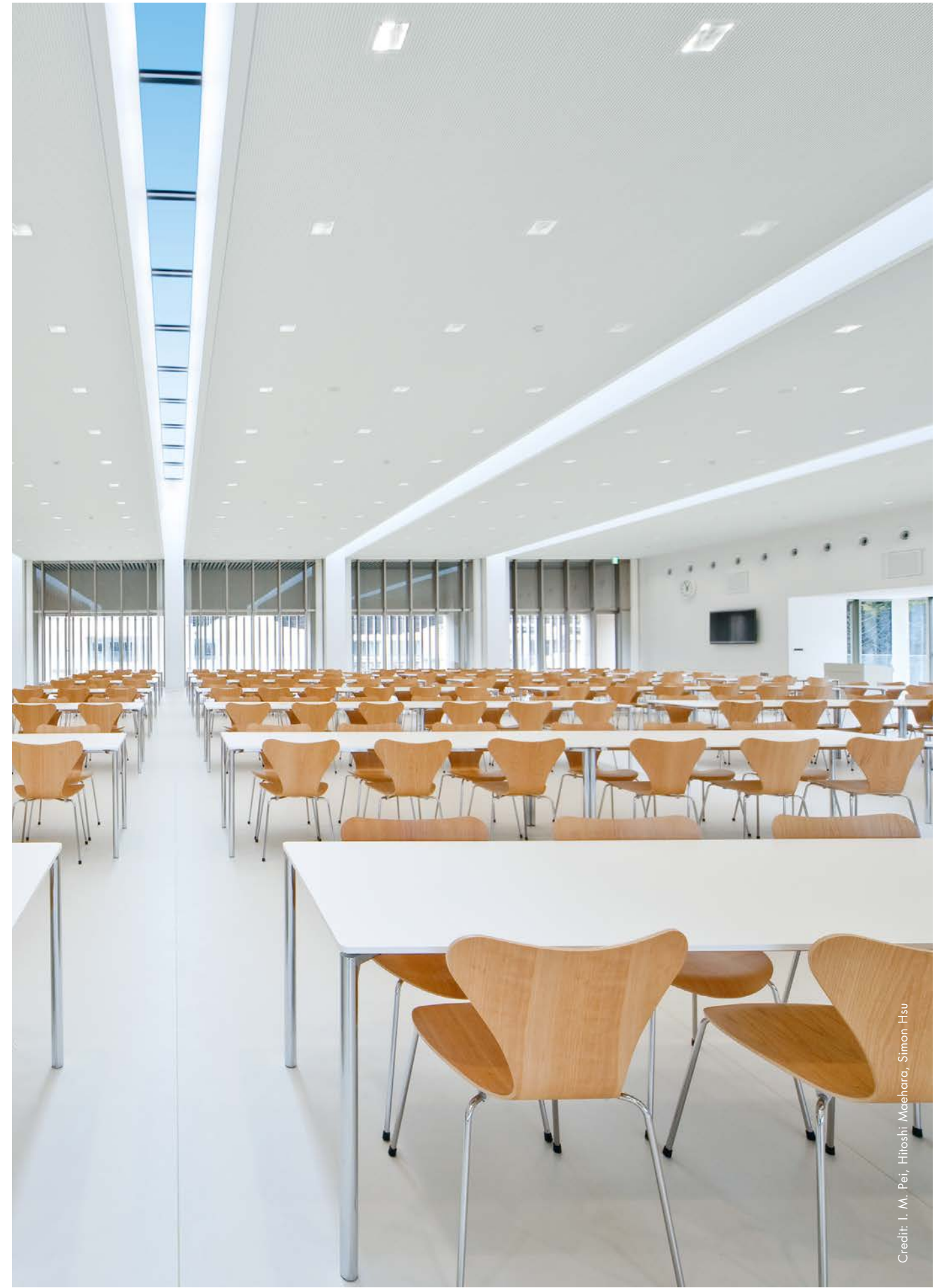
Architect: Bjarke Ingels Group



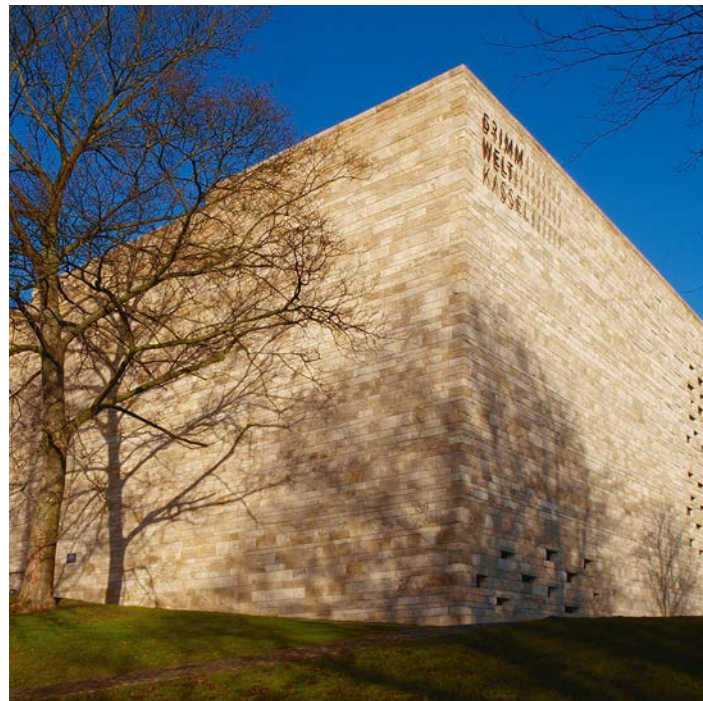
Credit: Luca Santiago



Radisson Blu Royal Hotel (Former SAS Royal Hotel)
Location: Copenhagen, Denmark
Project completed in: 2017
Interior architect: SPACE Copenhagen



Miho Institute of Aesthetics
Location: Shiga, Japan
Project completed in: 2012
Architect: I.M. Pei Architects & Ito Architects LLP



GRIMMWELT Kassel
 Location: Kassel, Germany
 Project completed in: 2014
 Architect: Kadawittfeldarchitektur

ANT™

DESIGNED BY ARNE JACOBSEN, 1952

The Ant™ represents a chair with an iconic shape. It was originally designed for the canteen at Danish pharmaceutical company Novo Nordisk. The Ant is easy to use and light to handle.



Credit: Sindre Karlsen/Pir II

The Norwegian Institute for Nature Research
Location: Trondheim, Norway
Project completed in: 2013
Architect: PIR II

ANT™



Credit: Egon Gade

The Scandinavian Golf Club
Location: Farum, Denmark
Project completed in: 2010
Architect: Henning Larsen Architects

GRAND PRIX™

DESIGNED BY ARNE JACOBSEN, 1957

Award winning, stackable and bold. Three words are seldom enough when introducing Arne Jacobsen's dining chair design from 1957. The chair was named Grand Prix™ after it won the Grand Prix prize at the Triennale in Milan.



Credit: HIROYUKI SATO

La Bonne Table
Location: Tokyo, Japan
Project completed in: 2014
Interior architect: Design Studio Glam

GRAND PRIX™



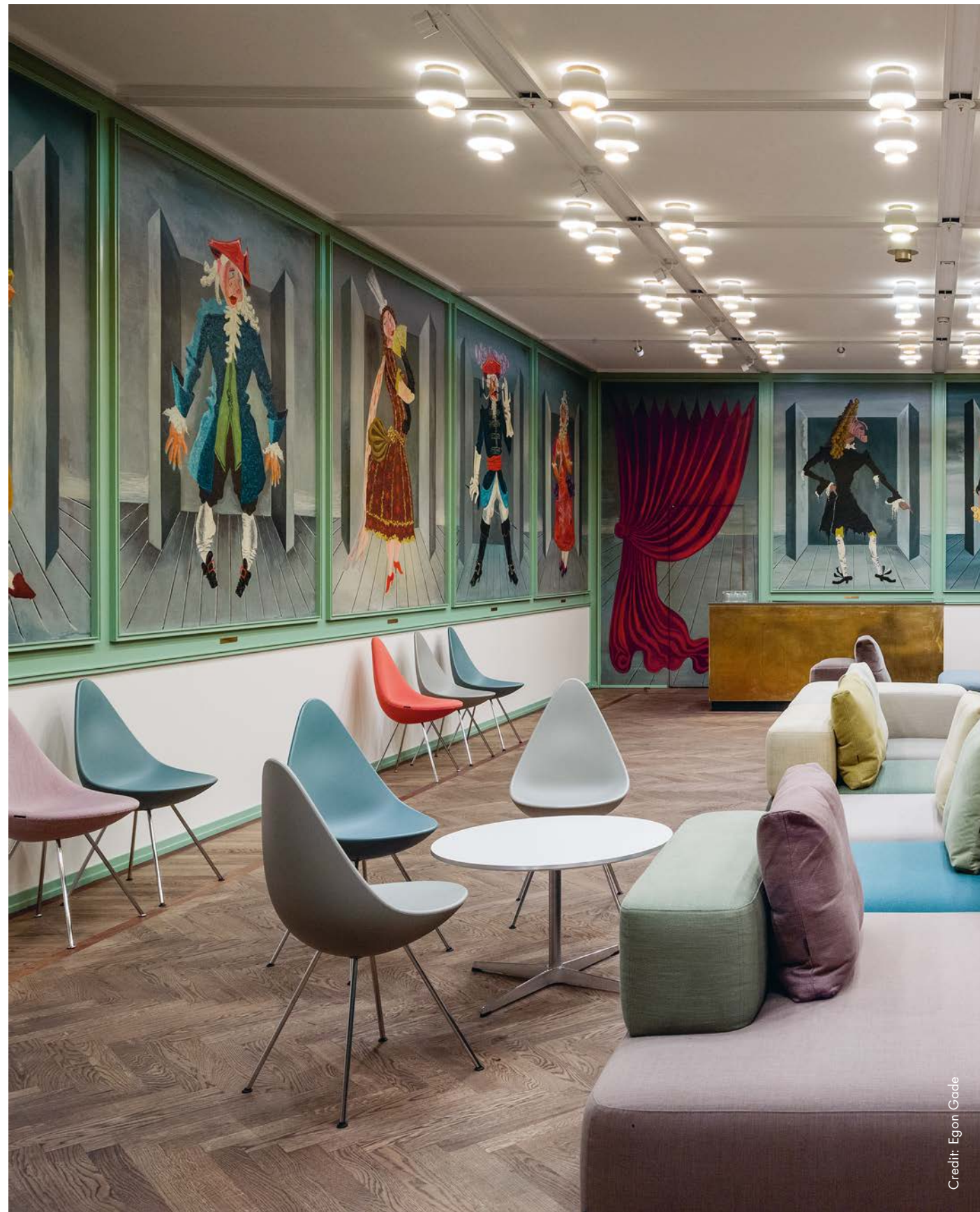
Credit: Jason Strong

Fotografiska
Location: Stockholm, Sweden
Project completed in: 2015
Architect: SPACE Copenhagen

DROP™

DESIGNED BY ARNE JACOBSEN, 1958

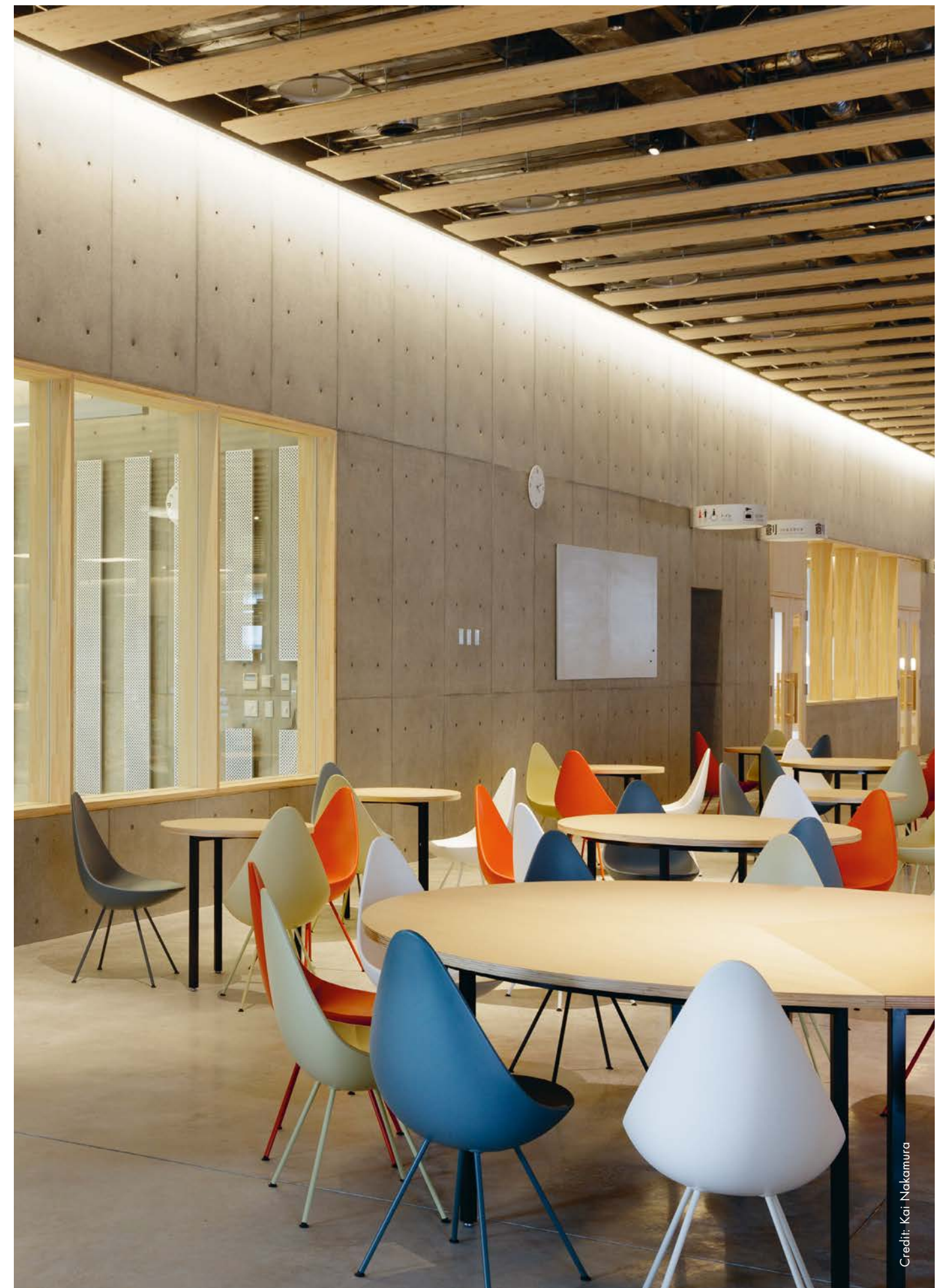
Another member of the iconic family designed for the SAS Royal Hotel, the Drop™ chair. It was originally designed for the hotel snack bar to fulfill the wish for a beautiful and small chair that seats you comfortably and that is easy to handle.



Credit: Egon Gade

The Royal Danish Theatre
Location: Copenhagen, Denmark
Project completed in: 2015
Interior architect: Republic of Fritz Hansen

DROP™



Credit: Kai Nakamura

Gifu Media Cosmos
Location: Gifu, Japan
Project completed in: 2015
Architect: Toyo Ito & Associates

NAP™

DESIGNED BY KASPER SALTO, 2010

The NAP™ chair is designed to accommodate all types of seating: Normal upright, Active forward leaning and Passive relaxing – hence the abbreviation, NAP. With NAP, the excellence lies in the details such as the ruffles on the seat and the high gloss of the back.



COWI
Location: Kongens Lyngby, Denmark
Project completed in: 2015
Architect: Dissing + Weitzling

NAP™

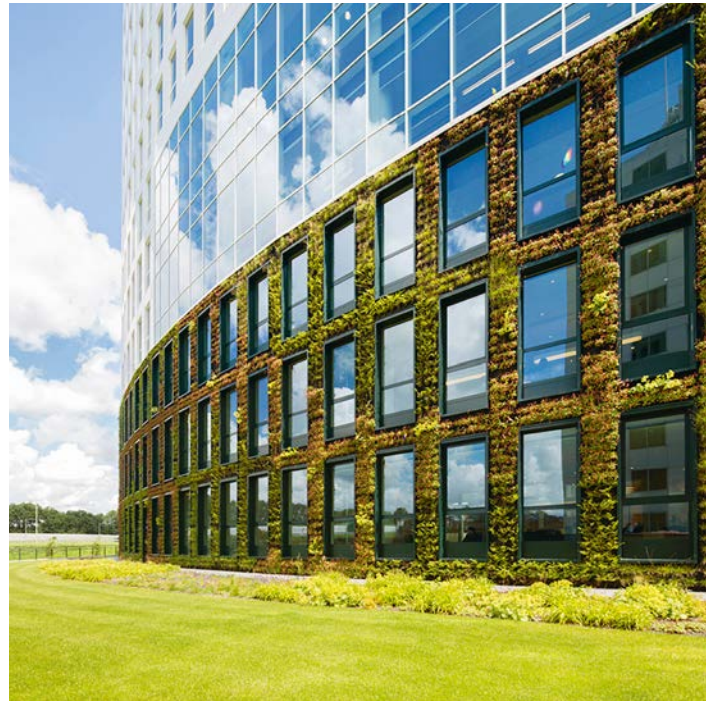


Max Planck Institute
Location: Cologne, Germany
Project completed in: 2013
Architect: Hammeskrause Architects

RIN™

DESIGNED BY HIROMICHI KONNO, 2008

Hiromichi Konno's RIN™ is a chair with an elegant appearance as well as an impeccable functionality. Konno found visual inspiration for the design in the shape of a bird's nest.



ENECO

Location: Rotterdam, Holland

Project completed in: 2014

Architect: Hofman Dujardin Architects



LITTLE FRIEND™

DESIGNED BY KASPER SALTO, 2005

Little Friend™ is a petite table that fits in a variety of settings. Use it as a coffee table in a lounge or as a flexible table in social zones. Adjust the height to your needs – whether you need to place your computer for working or your coffee for relaxing.



Deloitte

Location: Oslo, Norway

Project completed in: 2014

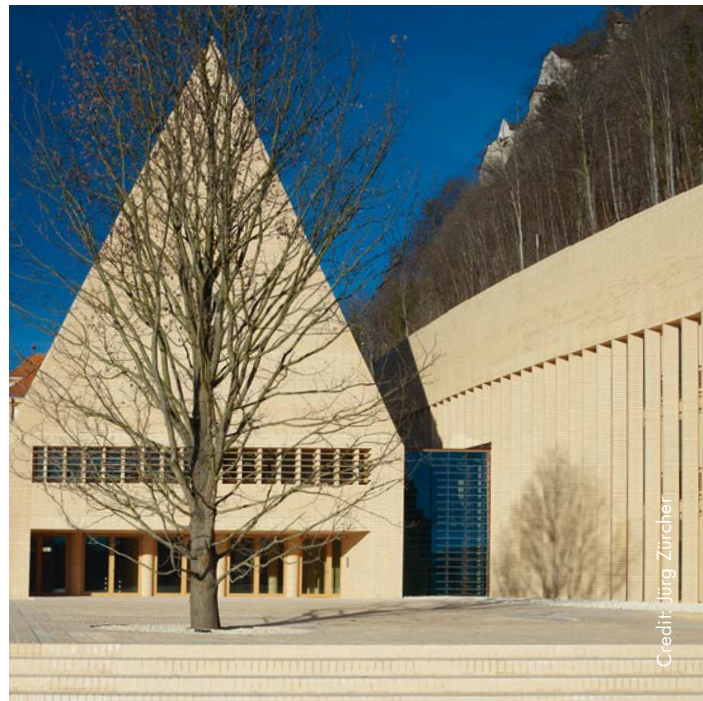
Architect/Interior architect: Snøhetta



OXFORD™

DESIGNED BY ARNE JACOBSEN, 1962

Another Arne Jacobsen masterpiece. Originally designed for the professors in the dining hall at St. Cathrine's College in Oxford, UK. Arne Jacobsen was the designer behind the chair and the architect behind the college. Every detail in both the chair and the building is a total piece of art. Today the Oxford™ chair comes in two designs: the Oxford™ Classic with classic, full upholstery and the Oxford™ Premium with three-layered, full upholstery with horizontal stitching.



State Forum and Parliament of Liechtenstein

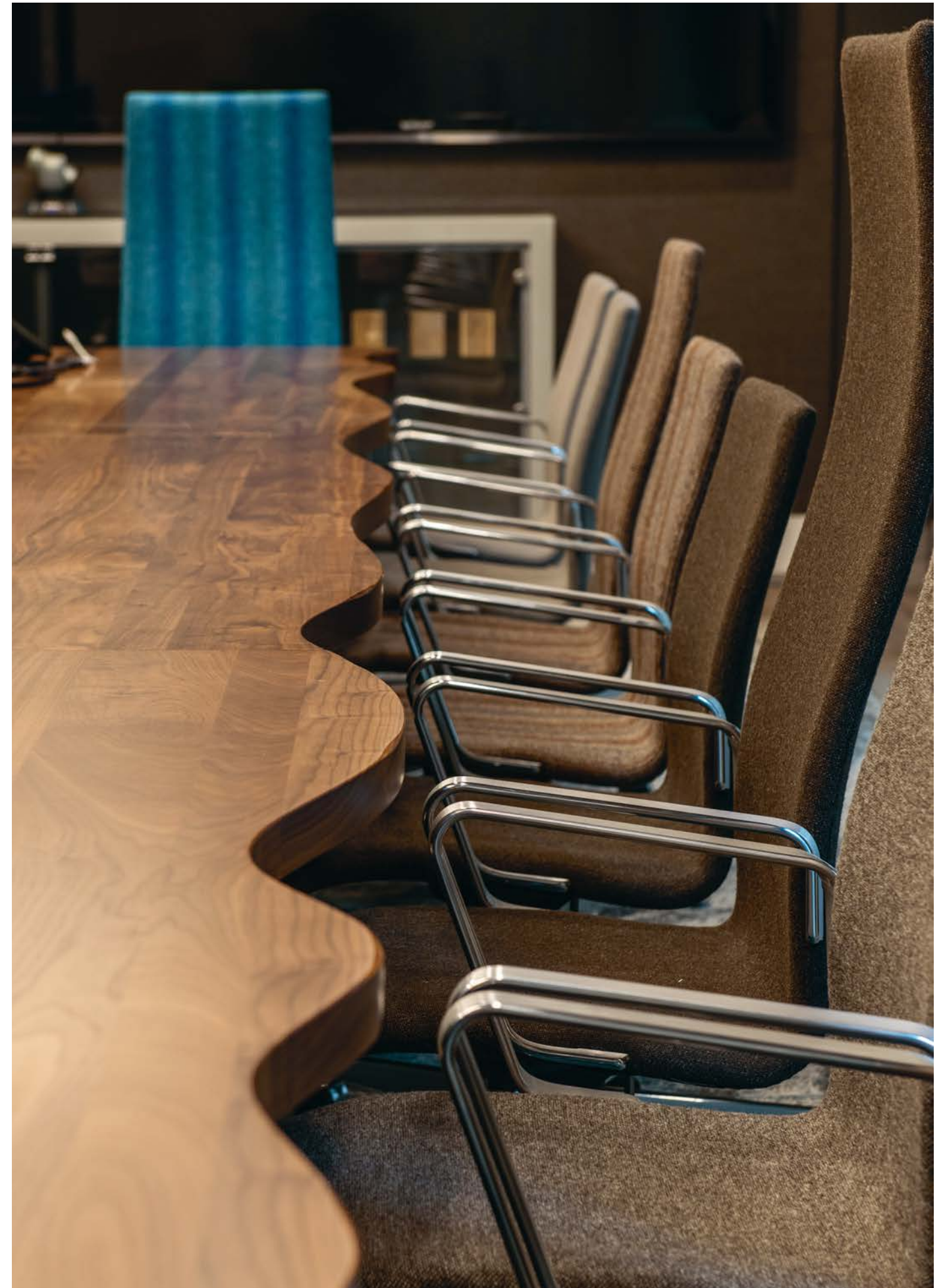
Location: Vaduz, Liechtenstein

Project completed in: 2008

Architect: Hansjörg Göritz Studio



Credit: Jürg Zürcher



Twitter

Location: London, United Kingdom

Project completed in:

Architect: IA Interior Architects & tothepoint



Credit: Egon Gade



Credit: Egon Gade

St Catherine's College
Location: Oxford, United Kingdom
Project completed in: 1962
Architect: Arne Jacobsen

EGG™

DESIGNED BY ARNE JACOBSEN, 1958

An ultimate design icon. When you bring in the Egg™ chair, you make a statement. Designed for the lobby at the SAS Royal Hotel in Copenhagen, the Egg gives you both privacy and comfort when sitting – and a great satisfaction when looking.



SAS Royal Hotel (today Radisson Blu Royal Hotel)

Location: Copenhagen, Denmark

Project completed in: 1960

Architect: Arne Jacobsen





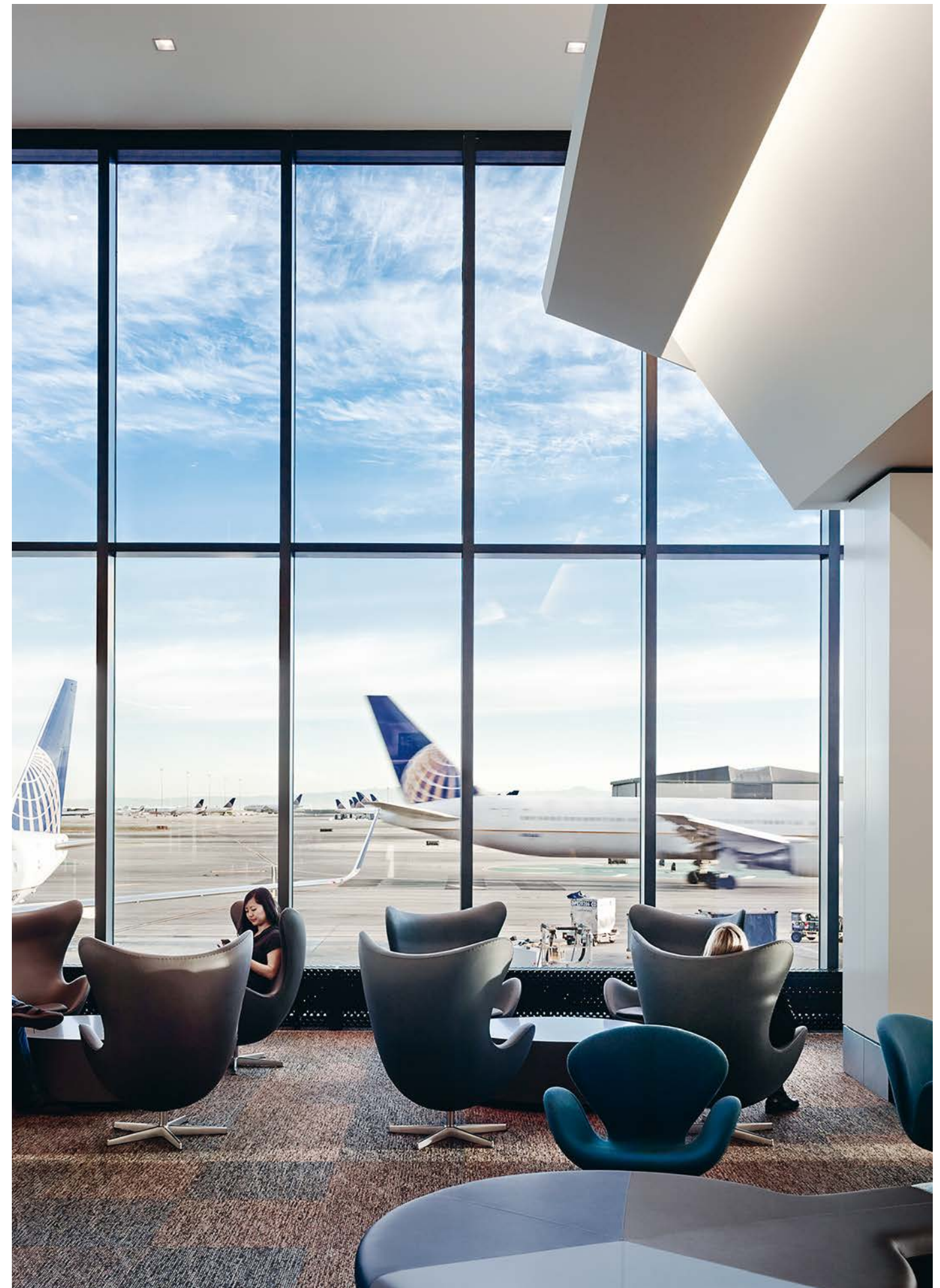
Credit: Cordelia Ewerth

Der SPIEGEL

Location: Hamburg, Germany

Project completed in: 2011

Architect: Henning Larsen Architects



San Francisco International Airport

Location: San Francisco, United States

Project completed in: 2015

Architect: Gensler & Partners

SWAN™

DESIGNED BY ARNE JACOBSEN, 1958

No straight lines – only curves. In 1958, when Arne Jacobsen created the Swan™ for the SAS Royal Hotel, the chair itself was a technological innovation. It stresses the designer's sense of working with curves and it was, and still is, a sculpturally beautiful piece of furniture.



CENTRE the Bakery

Location: Tokyo, Japan

Project completed in: 2013

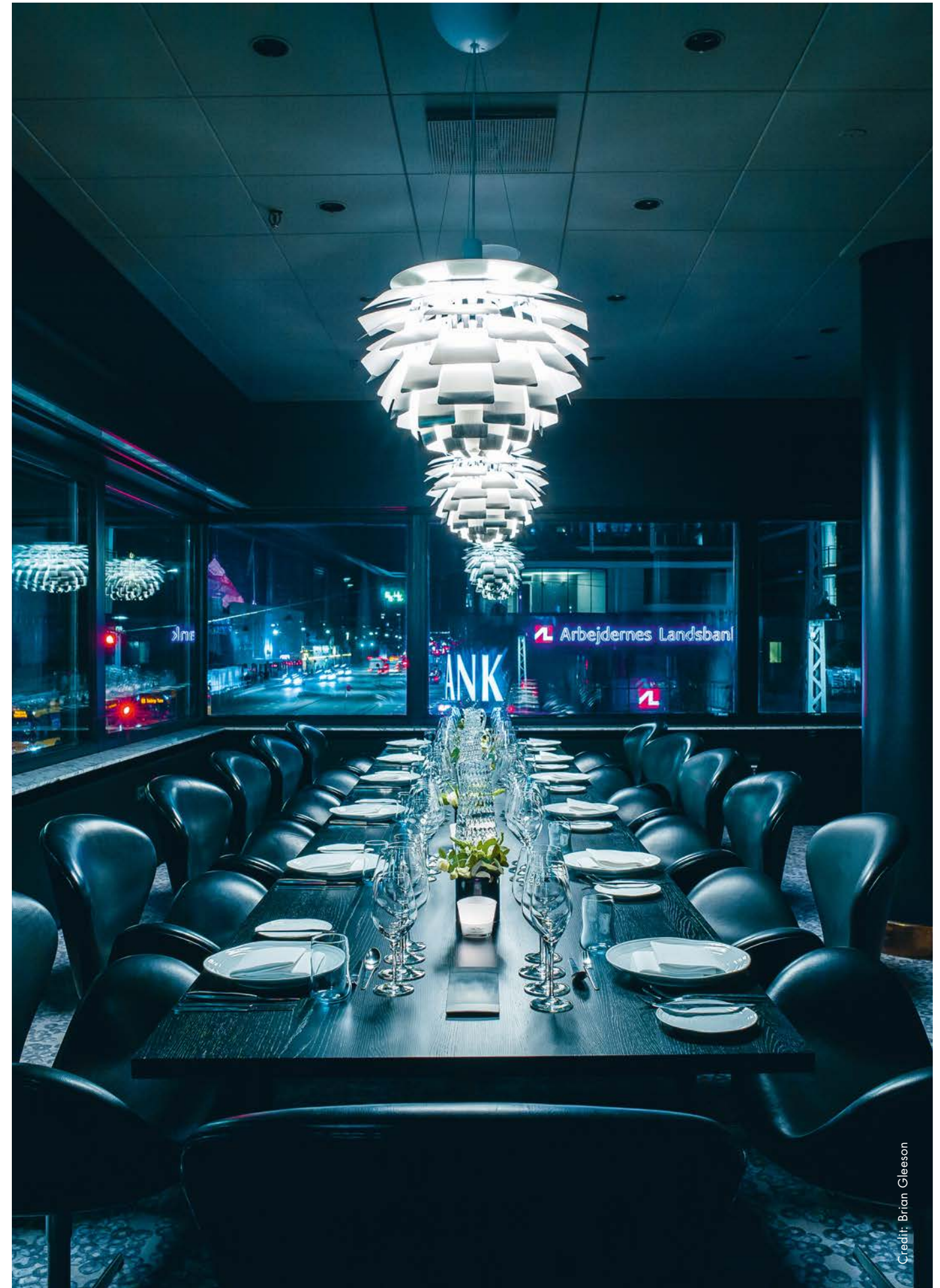
Interior architect: MONDUNIQUE



Credit: Hiroyuki Sato



ADA 1 Office Complex
Location: Hamburg, Germany
Project completed in: 2009
Architect: J. MAYER H

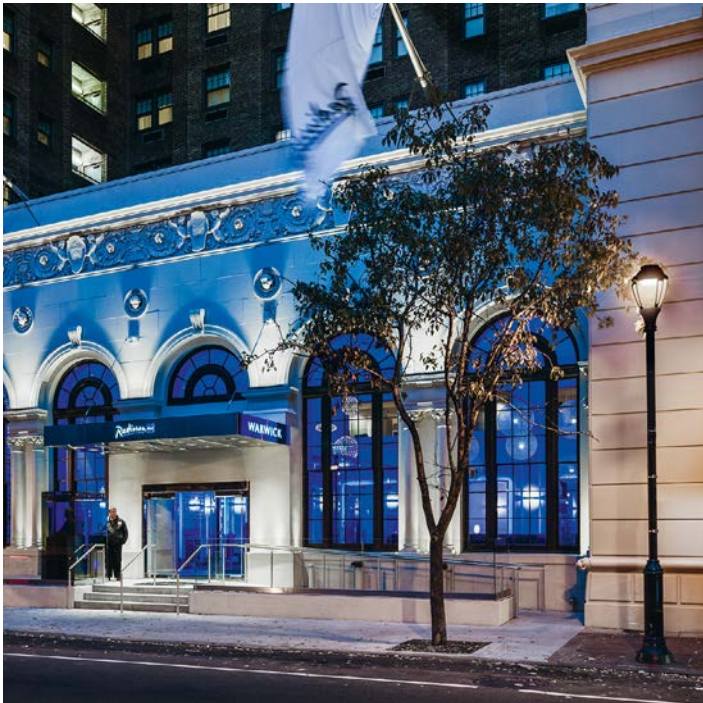


Radisson Blu Royal Hotel (Former SAS Royal Hotel)
Location: Copenhagen, Denmark
Project completed in: 2017
Interior architect: SPACE Copenhagen

RO™

DESIGNED BY JAIME HAYON, 2013

Danish design tradition meets Spanish temper. The high back lounge chair Ro™ offers you an intense calmness by sheltering your body and helps you immerse. The designer's sense of humor is contrasted with references to Nordic aesthetics in the chair's simplicity.



Radisson Blu Warwick Hotel Philadelphia
Location: Philadelphia, United States
Project completed in: 2014
Architect: Graven Images





Baccarat House

Location: Shanghai, China

Project completed in: 2014

Interior architect: Darlel Studio



Saks Fifth Avenue

Location: New York, United States

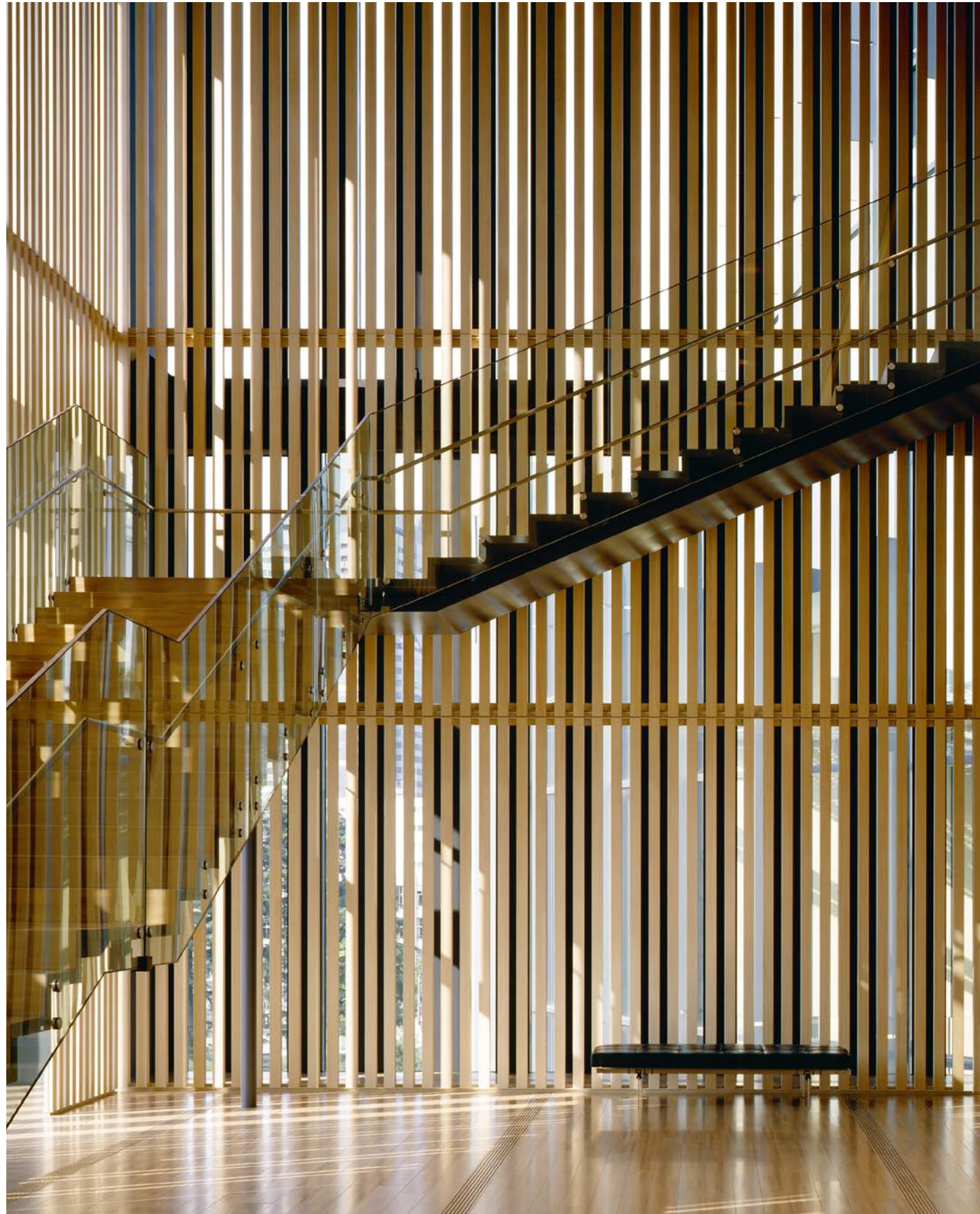
Project completed in: 2017

Architect: Found

PK80™

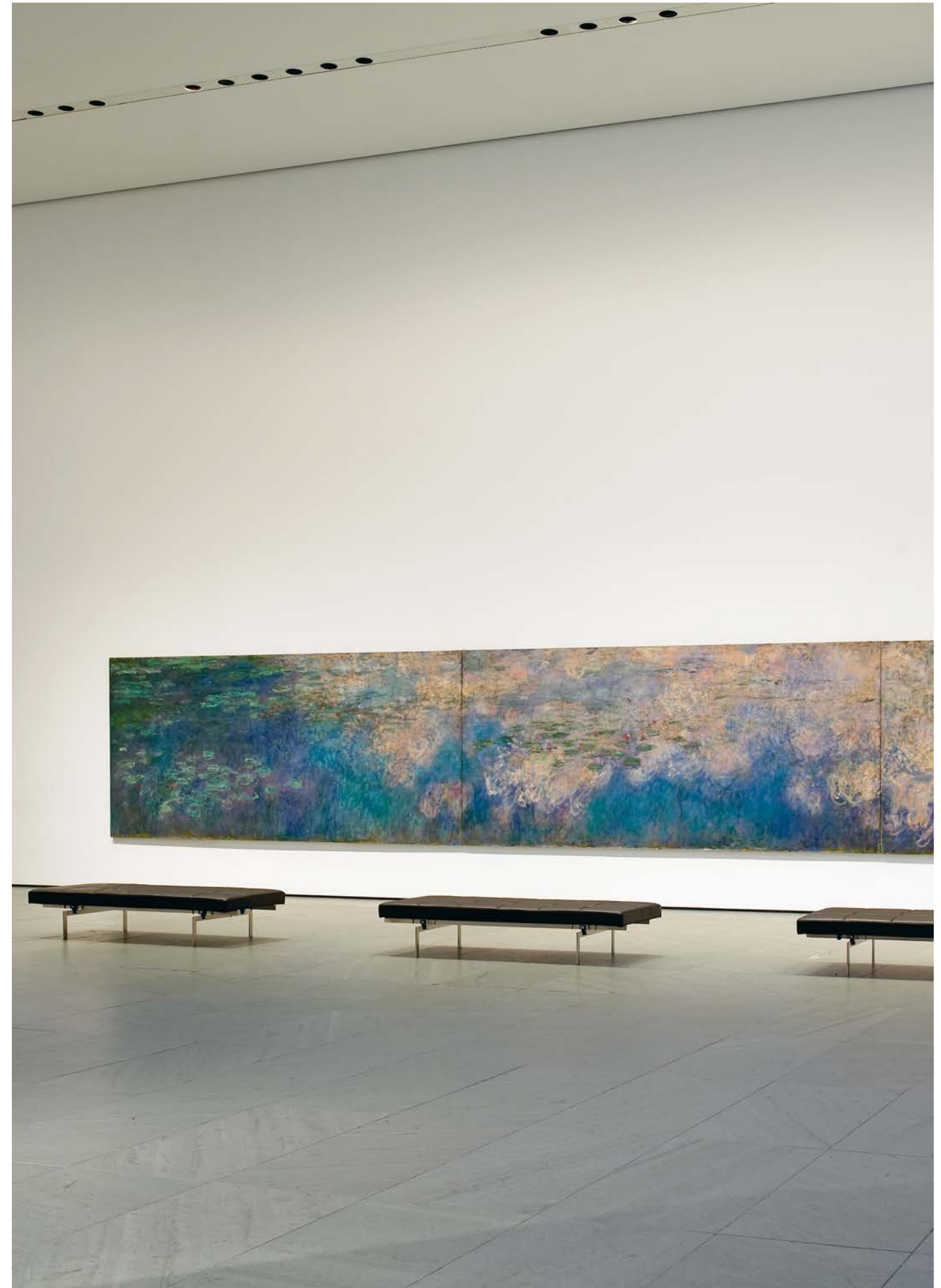
DESIGNED BY POUL KJÆRHOLM, 1957

The PK80™ daybed is one of Poul Kjærholm's most sophisticated designs. Kjærholm designed the daybed from Bauhaus principles, and the design is a clear illustration of Kjærholm's sense of refined details.



Suntory Museum of Art
Location: Tokyo, Japan
Project completed in: 2007
Architect: Kengo Kuma & Associates

PK80™



The Museum of Modern Art
Location: New York City, United States
Project completed in: 2004
Architect/Interior architect: Edward Durell Stone & Phillip L. Goodwin

FRI™

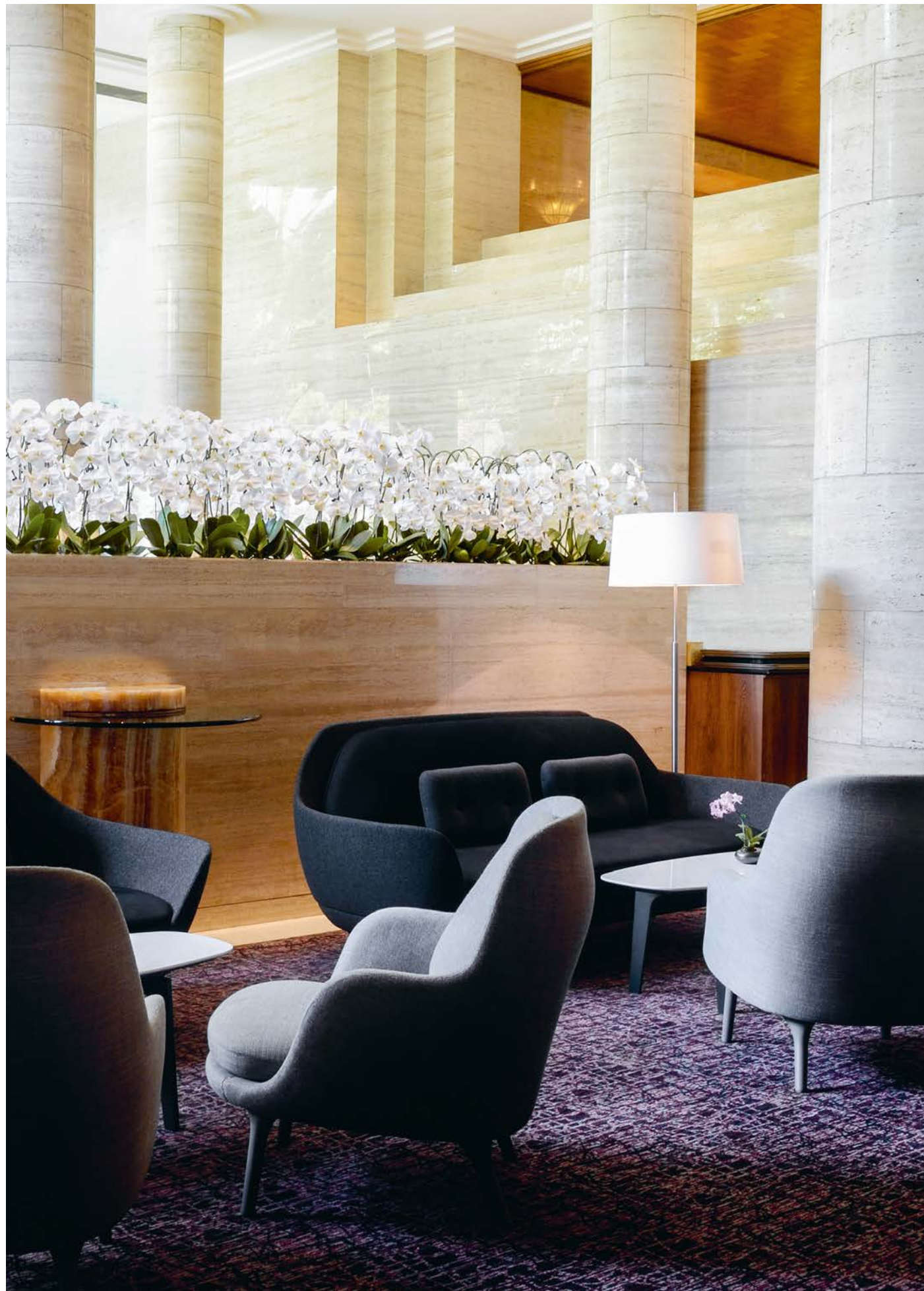
DESIGNED BY JAIME HAYON, 2015

Fri™ is designed to create a cosy feel in any setting. The lounge chair, designed by Jaime Hayon, is both open and welcoming as well as it can create a space of its own. Be it in a hotel bar or a lounge area.



Tivoli Hotel & Congress Center
Location: Copenhagen, Denmark
Project completed in: 2016
Architect/Interior architect: Kim Utzon Architects / Interiørgruppen





Sheraton Towers Singapore
 Location: Singapore
 Project completed in: 2017
 Interior architect: Republic of Fritz Hansen



Barceló Torre de Madrid
 Location: Madrid, Spain
 Project completed in: 2016
 Interior architect: Jaime Hayon

minuscule™

DESIGNED BY CECILIE MANZ, 2012

Innovation meets loving craftwork in Cecilie Manz's minuscule™ chair. Manz' design follows the lines of Arne Jacobsen's curvy classics and still creates a style of its own characterised by uncompromising comfortability and quality.



Clarion Hotel Energy
Location: Stavanger, Norway
Project completed in: 2012
Architect: Snøhetta



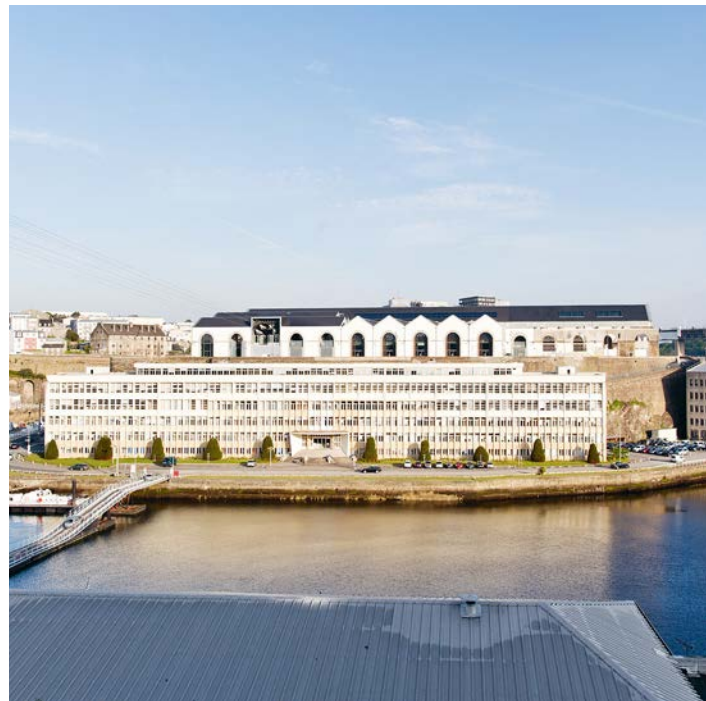
Credit: Egon Gode



VIA57™

DESIGNED BY BJARKE INGELS AND KIBISI, 2016

The VIA57™ chair represents modern craftsmanship for a modern lifestyle. It was created by Bjarke Ingels and KiBiSi for the VIA57 West building in New York. Experience the reclining, tetrahedral geometry of the chair that is both handcrafted and “computer crafted” in the mirroring of its architectural source of inspiration.



Media library of the Capuchins
Location: Brest, France
Project completed in: 2017
Architect: CANAL, atelier d'architecture

PAIR™

DESIGNED BY BENJAMIN HUBERT, 2016

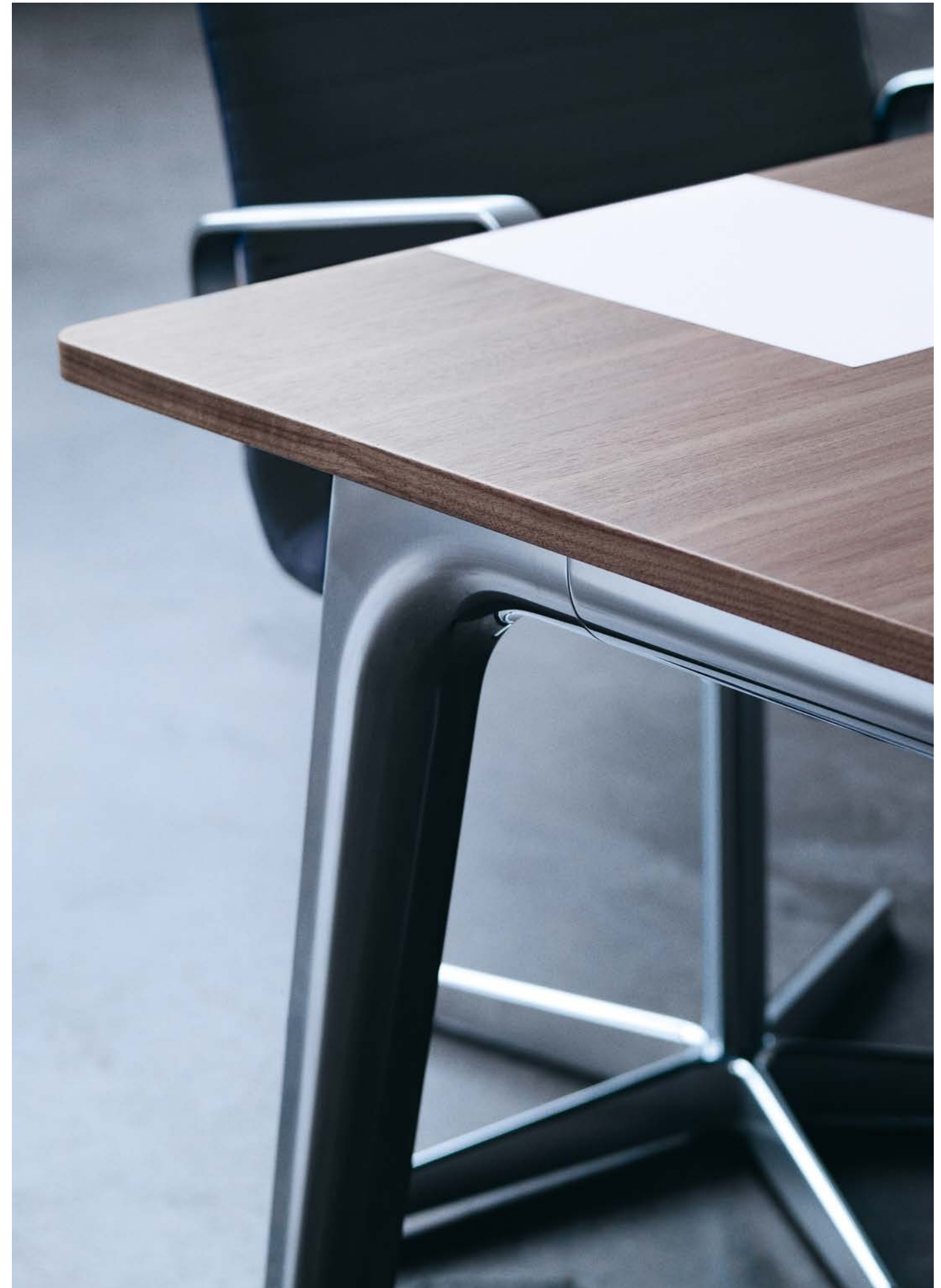
Benjamin Hubert's PAIR™ gives you unlimited possibilities to mix and match colours and materials. It can appear sparky and contrasty or elegant and subtle.



PLURALIS™

DESIGNED BY KASPER SALTO, 2016

Pluralis™ lives up to today's demand for a versatile work space. It is visually light and crafted with quality for ultimate longevity. As the designer Kasper Salto states, Pluralis pertains to more than one setting. Pluralis is designed for doing business – with pleasure.



OKSEN™

DESIGNED BY ARNE JACOBSEN, 1966

Known for his organic and soft lines in designs like the Swan™ and the Ant™, Arne Jacobsen surprised design connoisseurs all over the world when he first introduced Oksen™ in 1966. Reflecting its name - meaning 'the ox' in Danish - Oksen was big, bold and powerful.



RO™ SOFA

DESIGNED BY JAIME HAYON, 2017

The Ro™ Sofa is perfect for any open office environment or other spaces that has the need for a breakout area or a room division. The Ro™ chair's distinct, sculptural shape has been interpreted in the Ro Sofa version and the two now make up a small unified collection.



HEAD OF DESIGN



Christian Andresen

"Our history is what makes us unique and what cannot be imitated. We build the future of Republic of Fritz Hansen on this very history, and our task is to revolutionise, surprise and appeal to new clients and markets whilst remaining true to our roots. Our core design values are always reflected in our products. Every single piece of furniture is based on three overall design values; the visual, the emotional and the rational. Furthermore, aesthetics are always essential in our products."

OUR DESIGNERS

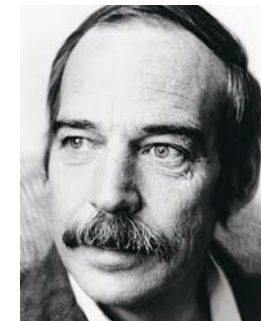
Working with multiple designers is essential to us. Danish, Spanish or Japanese. We work with an array of creative minds. Our common denominator? That the best result is created in the alliance – between our many years of experience and heritage and the innovative approach by our external designers.

Arne Jacobsen



The renowned architect and designer is the very backbone of Danish Design furniture. With classics like the Egg™, the Swan™ and the Series 7™ Arne Jacobsen's curvy design speaks for itself.

Poul Kjærholm



Poul Kjærholm's designs are all influenced by his background as a cabinet maker. His fascination for steel and love of natural materials like leather shines through in most of his masterpieces – among these the PK80™ daybed.

Benjamin Hubert



British industrial designer Benjamin Hubert brings intelligent design to the table. With the creation of the PAIR™ chair, he underlines that multiple possibilities balanced with light constructions is the recipe for success.

Kasper Salto



Highlighting the details in the materials used for any design is Kasper Salto's métier. The Danish designer truly underlines this in his meticulous designs – from the conference table Pluralis™ to the ICE™ or the NAP™ chair.

Jaime Hayon



Jaime Hayon's Spanish heritage and sense of humor are inherent in everything he creates. Experience his always playful expression in the pompous lounge chair Ro™ or the welcoming Sammen™ dining chair.

Cecilie Manz



Danish designer, Cecilie Manz, reflects the essence of uncompromising craftsmanship. The wooden Essay™ table and the curvaceous minuscule™ chair highlight her design philosophy which is based on both craftsmanship and functionality.

Bjarke Ingels & KIBISI



Renowned for a series of architectural masterpieces and industrial designs, Bjarke Ingels and KIBISI have created the lounge chair VIA57™. Their approach is conceptual and the chair design mirrors the structure of the building VIA57 West, which the chair was designed for.

Hiromichi Konno



Inspired by nature, Japanese designer, Hiromichi Konno, gives priority to harmony in his design. His chair RIN™ is the culmination of Danish and Japanese design traditions, illustrating an open and innovative approach to chair design.

SUSTAINABILITY QUALITY POLICY



Sustainability, design and premium quality are all part of the same solution. Therefore Fritz Hansen has developed a combined Quality, Environment and CSR policy. We will continuously strive for sustainable quality in all our activities. Sustainable quality refers to solutions where the quality, design and sustainability aspects are all equally important. Fritz Hansen will never compromise quality or design while working continuously on creating sustainable solutions. We will continuously seek unique solutions that will improve sustainability, quality and design simultaneously.

Fritz Hansen must comply with legal requirements as well as the requirements defined in ISO 9001 and ISO 14001. This policy is implemented through our quality & environmental management system. Fritz Hansen will aim to use wood (which includes veneer, laminates and solid wood) which originates from sustainable managed forests. In order to guarantee this, PEFC™/09-31-068 and FSC®-C120451 (Forest Stewardship Council®) Chain of Custody (COC) certifications have been implemented for selected products.

A COHESIVE LOOK AND FEEL

While our portfolio is comprised of products from different designers and architects, what they all share is a visual lingo that's visual, emotional and rational. Each piece is an enduring design with global appeal that looks contemporary in any setting. Impeccably crafted with durable materials, the red thread throughout is a simple aesthetic with a singular presence – without imposing itself on your surroundings. Add an impressive array of colours and combinations and you have a customised solution that's aligned with your company values. Not to mention a unique aesthetic that's distinctive from your competitors.

ICONS INSPIRE INNOVATION

Iconic designs actually inspire an innovative environment, stimulate performance and increase productivity. If you create an atmosphere of elegance, you're creating a space for contemplation. Room for creative interaction. An openness to new ideas. And above all, coherence between your brand and your business. When your surroundings are exceptional, people's experience of your company will be anything but ordinary. Want to experience an exceptional work environment yourself? Choose craftsmanship, long lasting design and impeccable quality to define your next project with Republic of Fritz Hansen™.

HEADQUARTERS

Allerødvej 8
3450 Allerød
Denmark

Tel: (+45) 48 17 23 00

Mail: salesupport@fritzhanzen.com

VAT no.: 14 12 02 11

STORE COPENHAGEN

Valkendorfsgrde 4
1151 København
Denmark

Tel: (+45) 3920 2031

STORE MILANO

Piazza San Simpliciano
20121 Milano
Italy

Tel: (+39) 02 36505606

STORE TOKYO

B1F&1F, 3-10-11 Kita-Aoyama, 107-0061
Minato-ku, Tokyo
Japan

Tel: (+81) 3 3400 3107

STORE & SHOWROOM NEW YORK

22 Wooster Street
NY 10013 New York
USA

Tel: (+001) 212.219.3226

STORE SAN FRANCISCO

440 Jackson Street
CA 94111 San Francisco
USA

Tel: (+001) 628.444.3620

